



CONCEPTUAL MASTERPLAN PRESENTATION



St Michael's Lutheran School have identified the need for a conceptual masterplan to provide a cost effective, holistic approach for upgrade of the R - 6 school and new ELC with consideration for modest future capacity increase.

General requirements include:

- Improved drop-off and car parking
- Rationalised access and transition zones
- 21st Century GLA's – integrated, flexible, collaborative community spaces
 - Accessible amenities, resource spaces and enhanced SLA'S
 - Consideration of improved administration/staff spaces
 - Activation of multi-purpose mezzanine level
 - Continued access to open natural play spaces

The following aims to promote discussion for a staged approach to achieve these requirements, whilst minimising impact on operations and utilising as much of the existing infrastructure as possible to contain construction time and costs.



LEGEND

COMMUNITIES

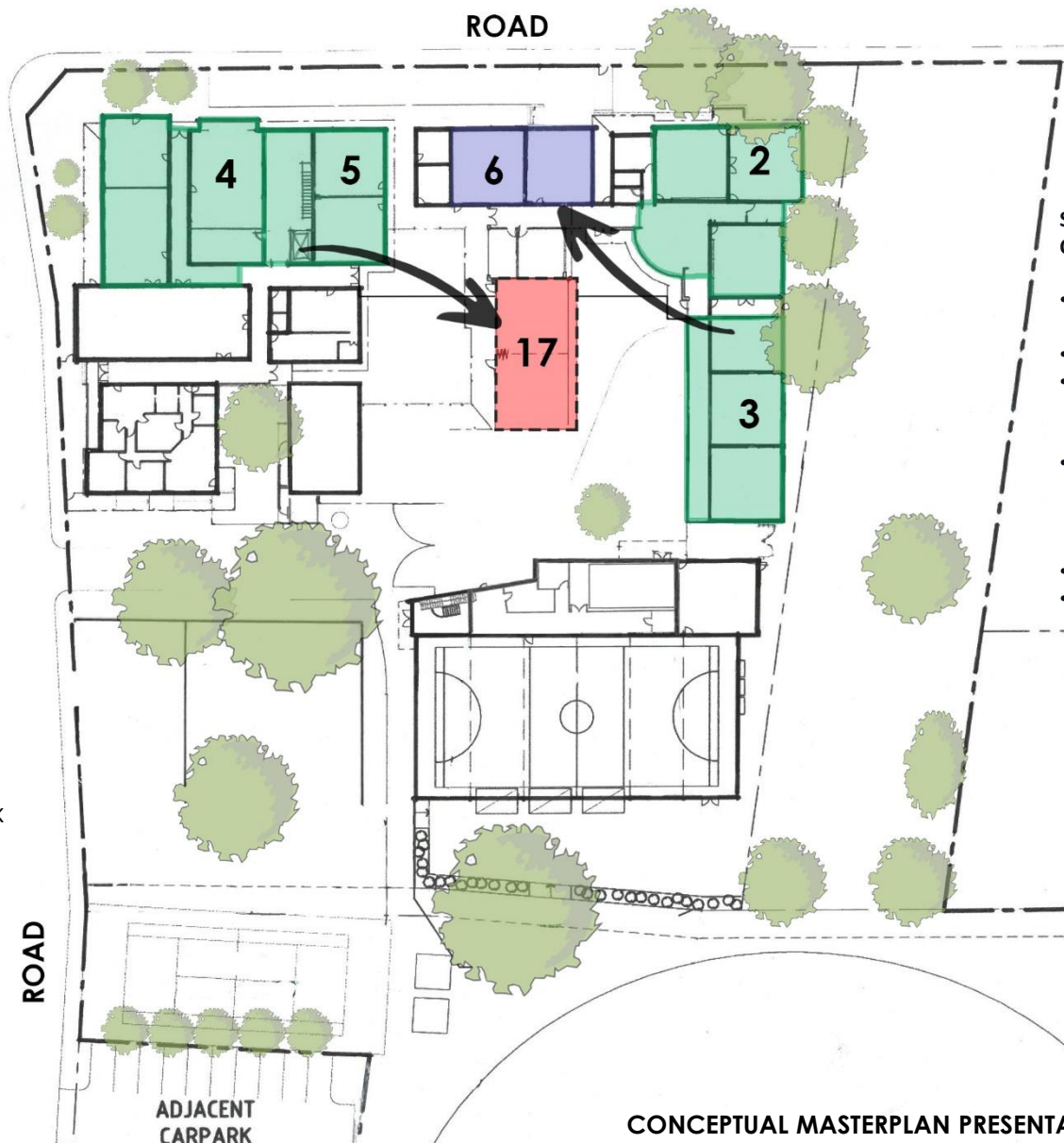
1. ELC (36 MONTHS TO PRE-SCHOOL)
- 1A. ELC (LONG DAY CARE - BIRTH TO 36 MONTHS)
2. RECEPTION
3. YR 1 + 2 COMMUNITY
4. YR 3 + 4 COMMUNITY
5. YR 5 + 6 COMMUNITY

SPECIAL LEARNING AREAS

6. WELL BEING CENTRE
7. P.E CENTRE
8. RESOURCE CENTRE + MUSIC FACILITIES + (MORNING/EVENING OSHC HUB)
9. MAKERS SPACE (EXPANDED)
10. TEACHERS FACILITIES & TOILETS
11. TOILETS
12. ART ROOM/SPECIALITY LEARNING FACILITIES

FUTURE OPPORTUNITIES

13. ADMINISTRATION/STAFF ROOM FACILITIES
14. ACCESS RAMP WITH VIEWING DECK TO UPPER LEVEL
15. ELC CARPARK
16. PLAYGROUND/OVAL PAVILION
17. COVERED WORKING SPACE
18. INTERNAL CONNECTION
19. STUDENT PLAZA
20. GATEWAY ENTRY PLAZA



STAGE 1 - PHYSICALLY ESTABLISH COMMUNITIES

- ESTABLISH COMMUNITIES WITHIN THE SCHOOL.
- OPEN UP BETWEEN CLASSES.
- CREATE DIVERSITY OF LEARNING SPACES WITHIN THESE COMMUNITIES
- DIVERSITY OF THESE SPACES THROUGH A VARIETY OF FURNITURE, BOOTHS AND GROUP WORKSPACES
- RELOCATE WELLBEING CENTRE
- RELOCATE LIBRARY TO HUB SPACE

MASTERPLAN

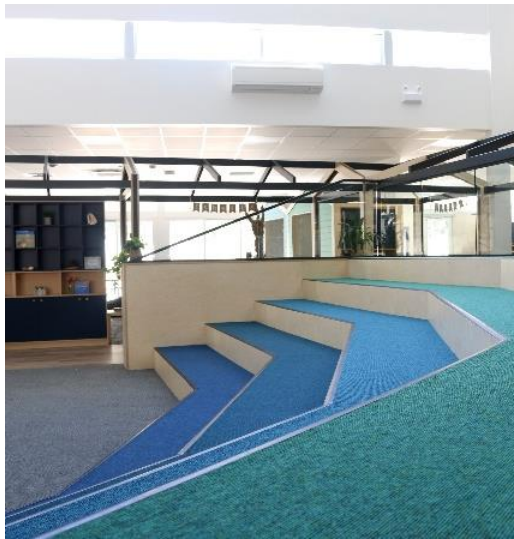
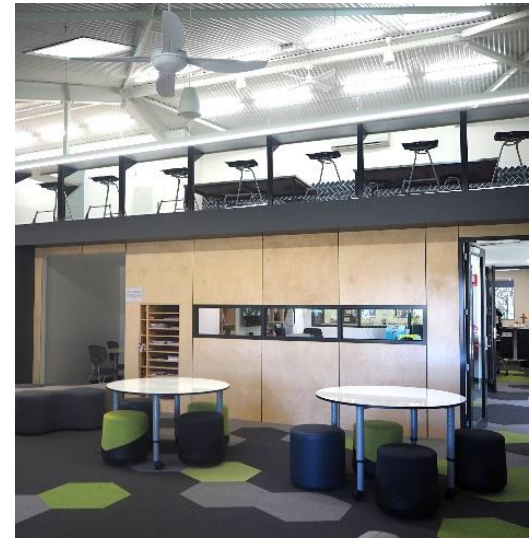
SCALE 1:500 @ A3

CONCEPTUAL MASTERPLAN PRESENTATION-STAGING

ST MICHAEL'S LUTHERAN SCHOOL
6 BALHANNAH ROAD, HAHNDORF SA 5245

2118 - 28.06.1022

© copyright JBG Architects Pty. Ltd. All rights reserved

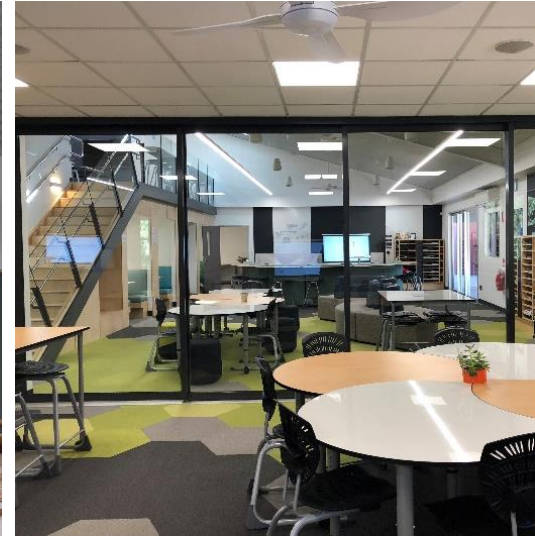


MULTI-PURPOSE CLASSROOM SPACES

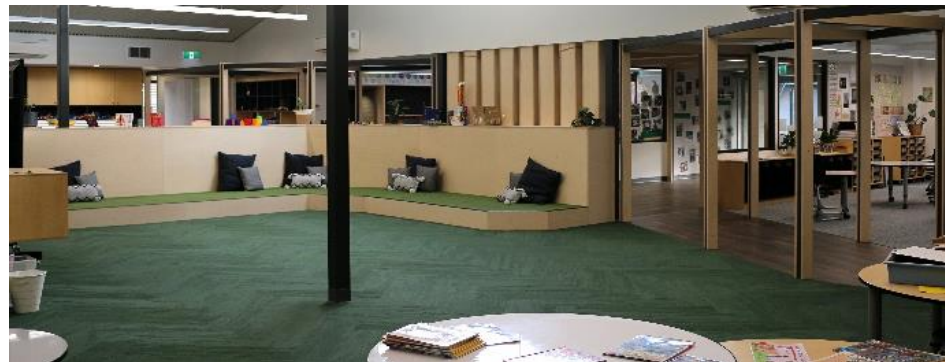
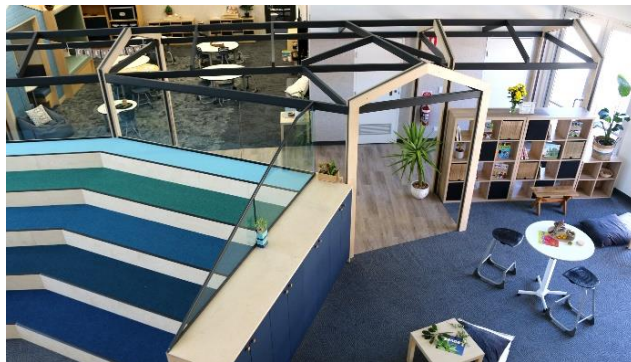
CONCEPTUAL MASTERPLAN PRESENTATION-STAGING



MULTI-PURPOSE CLASSROOM SPACES



CONCEPTUAL MASTERPLAN PRESENTATION-STAGING



MULTI-PURPOSE CLASSROOM SPACES

CONCEPTUAL MASTERPLAN PRESENTATION-STAGING

ST MICHAELS LUTHERAN SCHOOL
 6 BALHANNAH ROAD, HAHNDORF SA 5245

2118 - 28.06.1022

© copyright JBG Architects Pty. Ltd. All rights reserved



MULTI-PURPOSE CLASSROOM SPACES

CONCEPTUAL MASTERPLAN PRESENTATION-STAGING

LEGEND

COMMUNITIES

1. ELC (36 MONTHS TO PRE-SCHOOL)
- 1A. ELC (LONG DAY CARE - BIRTH TO 36 MONTHS)
2. RECEPTION
3. YR 1 + 2 COMMUNITY
4. YR 3 + 4 COMMUNITY
5. YR 5 + 6 COMMUNITY

SPECIAL LEARNING AREAS

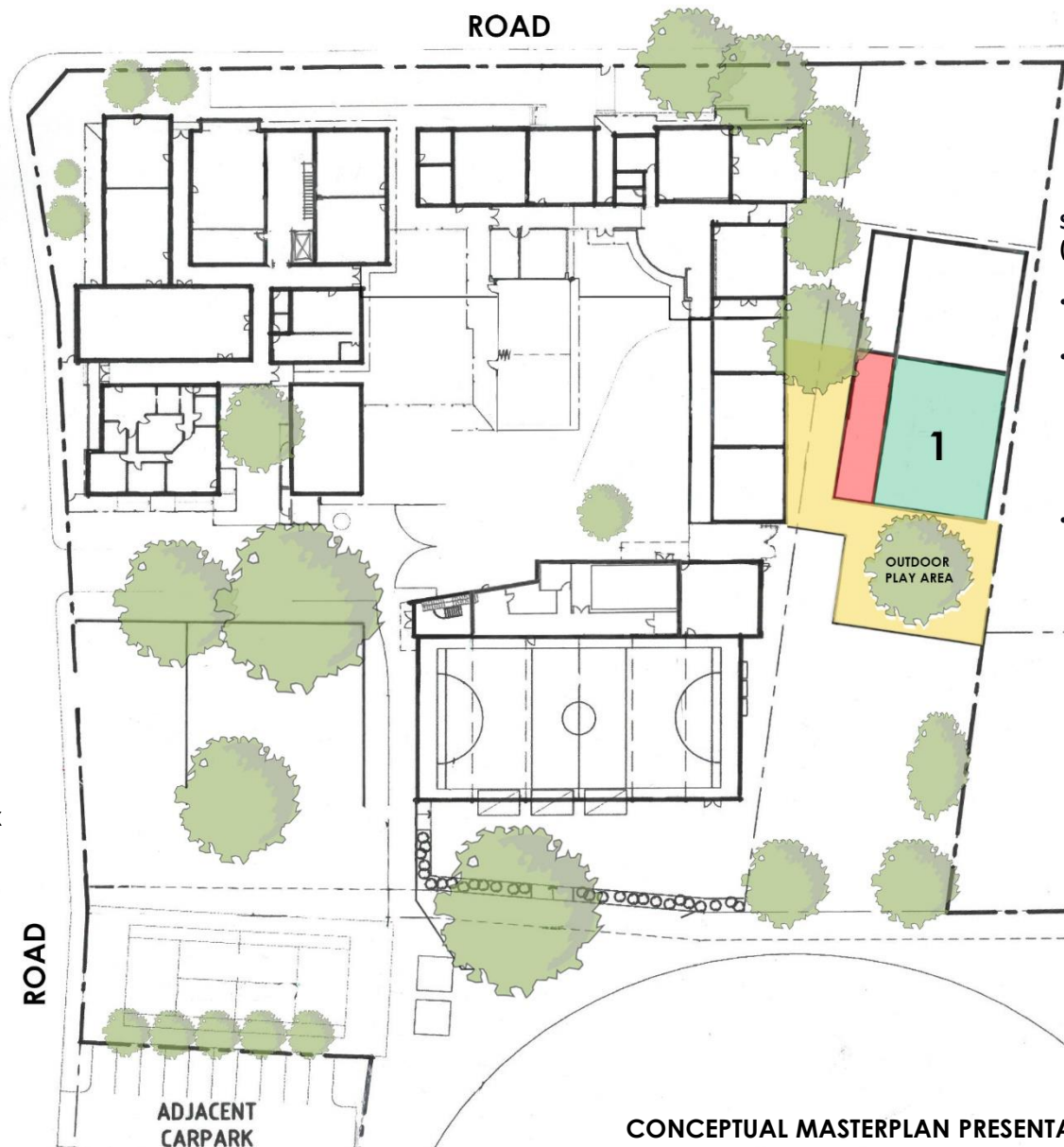
6. WELL BEING CENTRE
7. P.E CENTRE
8. RESOURCE CENTRE + MUSIC FACILITIES + (MORNING/EVENING OSHC HUB)
9. MAKERS SPACE (EXPANDED)
10. TEACHERS FACILITIES & TOILETS
11. TOILETS
12. ART ROOM/SPECIALITY LEARNING FACILITIES

FUTURE OPPORTUNITIES

13. ADMINISTRATION/STAFF ROOM FACILITIES
14. ACCESS RAMP WITH VIEWING DECK TO UPPER LEVEL
15. ELC CARPARK
16. PLAYGROUND/OVAL PAVILION
17. COVERED WORKING SPACE
18. INTERNAL CONNECTION
19. STUDENT PLAZA
20. GATEWAY ENTRY PLAZA

STAGE 2 – ELC (36 MONTHS TO PRE-SCHOOL)

- DEMOLISH EXISTING BUILDINGS + CLEAR SITE FOR E.L.C.
- CONSTRUCT E.L.C. THAT INCLUDES MAIN ACTIVITY/WITHDRAWAL SPACES, TEACHER PREP/STAFF FACILITIES, FOYER/ENTRY, OFFICE, KITCHEN, TOILETS, LAUNDRY & UNDERCOVER VERANDAH
- FENCED OFF OUTDOOR PLAY AREA



MASTERPLAN
SCALE 1:500 @ A3

CONCEPTUAL MASTERPLAN PRESENTATION-STAGING

ST MICHAEL'S LUTHERAN SCHOOL
6 BALHANNAH ROAD, HAHNDORF SA 5245
2118 - 28.06.1022

© copyright JBG Architects Pty. Ltd. All rights reserved



EARLY LEARNING CENTRE

CONCEPTUAL MASTERPLAN PRESENTATION-STAGING

ST MICHAELS LUTHERAN SCHOOL
 6 BALHANNAH ROAD, HAHNDORF SA 5245

2118 - 28.06.1022

© copyright JBG Architects Pty. Ltd. All rights reserved

LEGEND

COMMUNITIES

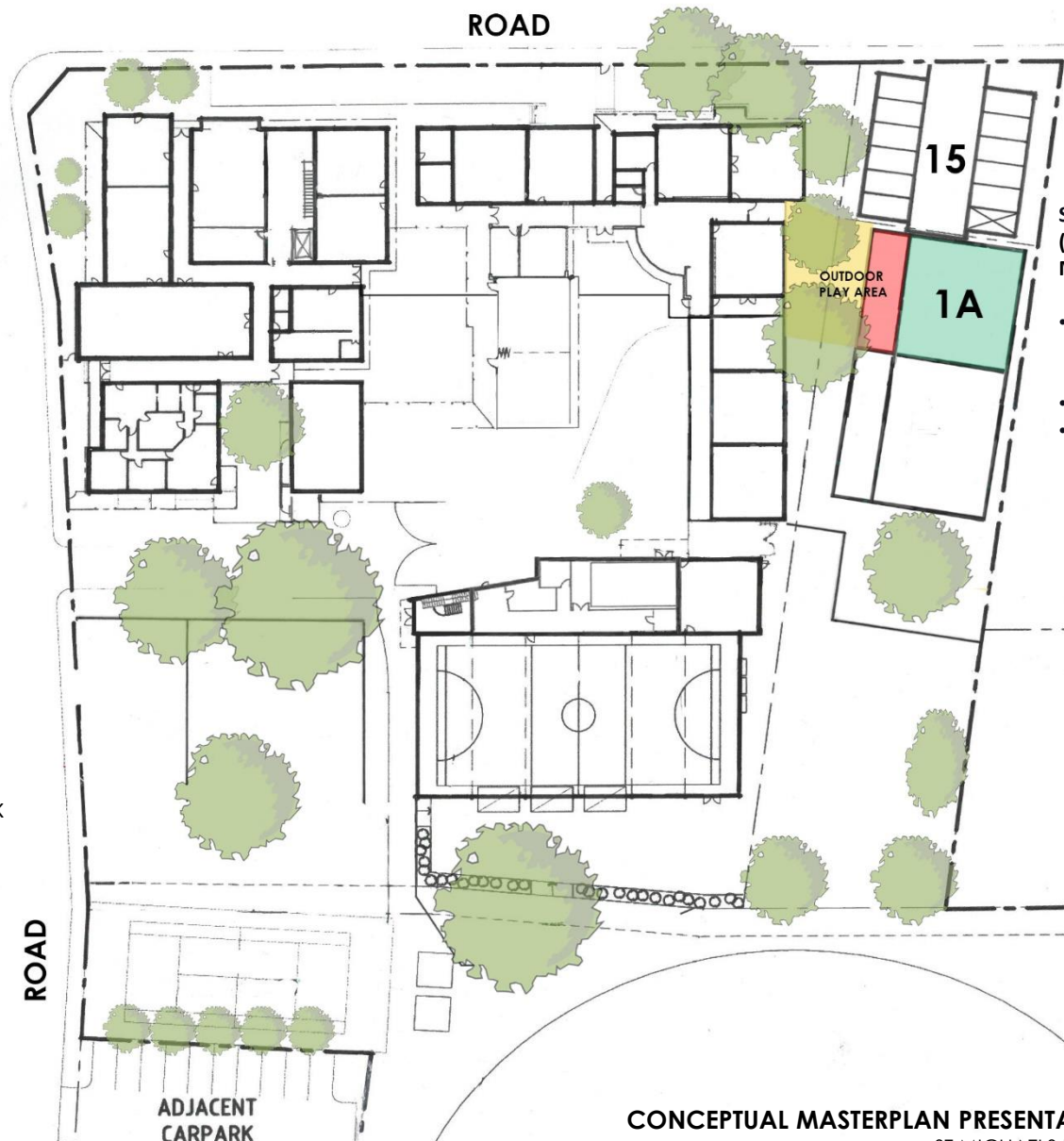
1. ELC (36 MONTHS TO PRE-SCHOOL)
- 1A. ELC (LONG DAY CARE - BIRTH TO 36 MONTHS)
2. RECEPTION
3. YR 1 + 2 COMMUNITY
4. YR 3 + 4 COMMUNITY
5. YR 5 + 6 COMMUNITY

SPECIAL LEARNING AREAS

6. WELL BEING CENTRE
7. P.E CENTRE
8. RESOURCE CENTRE + MUSIC FACILITIES + (MORNING/EVENING OSHC HUB)
9. MAKERS SPACE (EXPANDED)
10. TEACHERS FACILITIES & TOILETS
11. TOILETS
12. ART ROOM/SPECIALITY LEARNING FACILITIES

FUTURE OPPORTUNITIES

13. ADMINISTRATION/STAFF ROOM FACILITIES
14. ACCESS RAMP WITH VIEWING DECK TO UPPER LEVEL
15. ELC CARPARK
16. PLAYGROUND/OVAL PAVILION
17. COVERED WORKING SPACE
18. INTERNAL CONNECTION
19. STUDENT PLAZA
20. GATEWAY ENTRY PLAZA



STAGE 3 – ELC (LONG DAY CARE - BIRTH TO 36 MONTHS)

- CONSTRUCT EXTENSION TO ACCOMMODATE (BIRTH TO 36 MONTHS)
- OUTDOOR AREA
- CONSTRUCT CAR PARK

MASTERPLAN
SCALE 1:500 @ A3

CONCEPTUAL MASTERPLAN PRESENTATION-STAGING

ST MICHAEL'S LUTHERAN SCHOOL
6 BALHANNAH ROAD, HAHNDORF SA 5245
2118 - 28.06.1022

© copyright JBG Architects Pty. Ltd. All rights reserved



OUTDOOR LEARNING



CONCEPTUAL MASTERPLAN PRESENTATION-STAGING

ST MICHAELS LUTHERAN SCHOOL
6 BALHANNAH ROAD, HAHNDORF SA 5245
2118 - 28.06.1022

© copyright JBG Architects Pty. Ltd. All rights reserved



LEGEND

COMMUNITIES

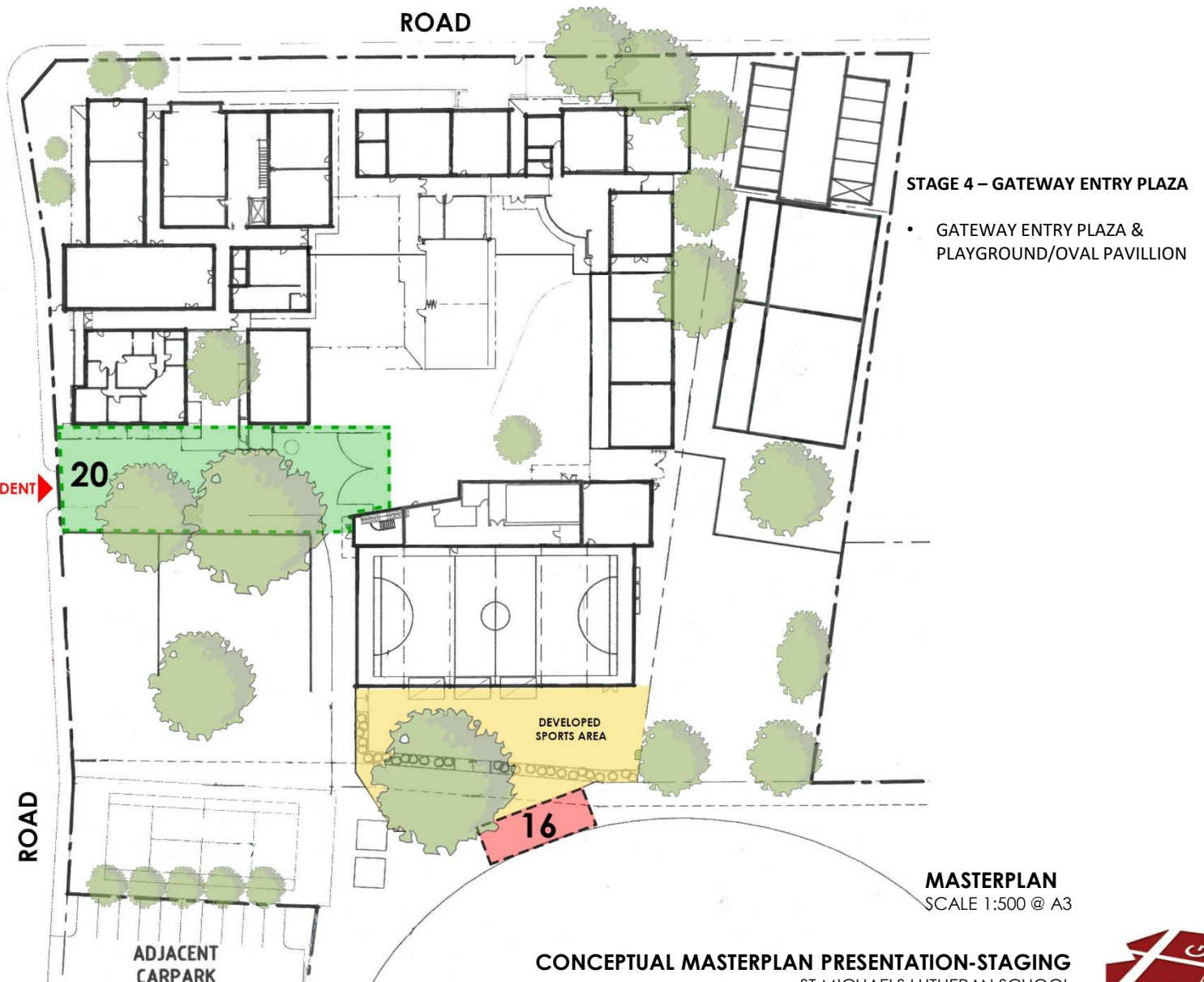
1. ELC (36 MONTHS TO PRE-SCHOOL)
- 1A. ELC (LONG DAY CARE - BIRTH TO 36 MONTHS)
2. RECEPTION
3. YR 1 + 2 COMMUNITY
4. YR 3 + 4 COMMUNITY
5. YR 5 + 6 COMMUNITY

SPECIAL LEARNING AREAS

6. WELL BEING CENTRE
7. P.E CENTRE
8. RESOURCE CENTRE + MUSIC FACILITIES + (MORNING/EVENING OSHC HUB)
9. MAKERS SPACE (EXPANDED)
10. TEACHERS FACILITIES & TOILETS
11. TOILETS
12. ART ROOM/SPECIALITY LEARNING FACILITIES

FUTURE OPPORTUNITIES

13. ADMINISTRATION/STAFF ROOM FACILITIES
14. ACCESS RAMP WITH VIEWING DECK TO UPPER LEVEL
15. ELC CARPARK
16. PLAYGROUND/OVAL PAVILION
17. COVERED WORKING SPACE
18. INTERNAL CONNECTION
19. STUDENT PLAZA
20. GATEWAY ENTRY PLAZA





OUTDOOR LEARNING



CONCEPTUAL MASTERPLAN PRESENTATION-STAGING

ST MICHAELS LUTHERAN SCHOOL
6 BALHANNAH ROAD, HAHNDORF SA 5245

2118 - 28.06.1022

© copyright JBG Architects Pty. Ltd. All rights reserved



LEGEND

COMMUNITIES

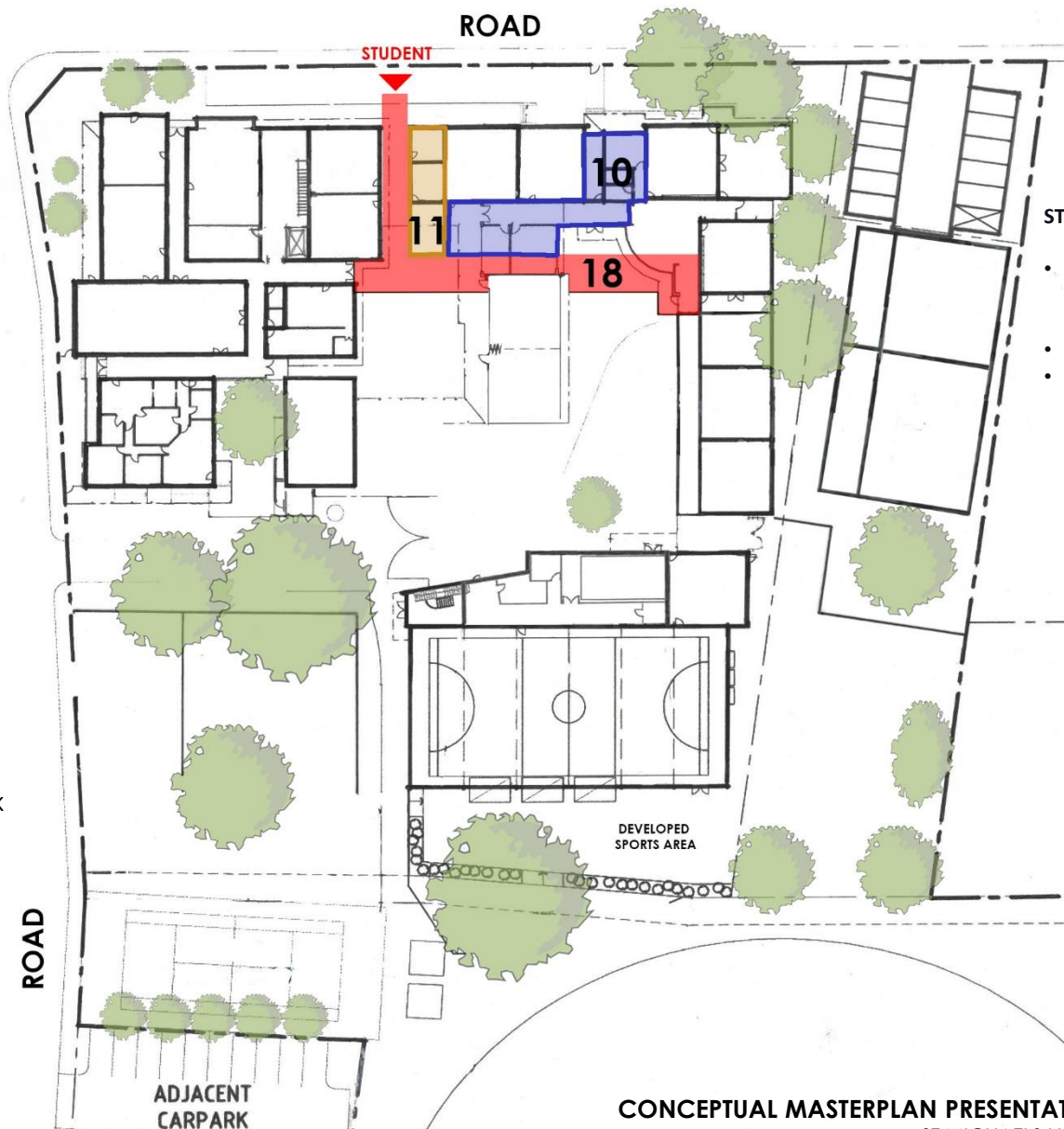
1. ELC (36 MONTHS TO PRE-SCHOOL)
- 1A. ELC (LONG DAY CARE - BIRTH TO 36 MONTHS)
2. RECEPTION
3. YR 1 + 2 COMMUNITY
4. YR 3 + 4 COMMUNITY
5. YR 5 + 6 COMMUNITY

SPECIAL LEARNING AREAS

6. WELL BEING CENTRE
7. P.E CENTRE
8. RESOURCE CENTRE + MUSIC FACILITIES + (MORNING/EVENING OSHC HUB)
9. MAKERS SPACE (EXPANDED)
10. TEACHERS FACILITIES & TOILETS
11. TOILETS
12. ART ROOM/SPECIALITY LEARNING FACILITIES

FUTURE OPPORTUNITIES

13. ADMINISTRATION/STAFF ROOM FACILITIES
14. ACCESS RAMP WITH VIEWING DECK TO UPPER LEVEL
15. ELC CARPARK
16. PLAYGROUND/OVAL PAVILION
17. COVERED WORKING SPACE
18. INTERNAL CONNECTION
19. STUDENT PLAZA
20. GATEWAY ENTRY PLAZA



STAGE 5

- UPGRADE EXISTING TOILETS AND EXPAND TO INCLUDE ACCESSIBLE TOILET FACILITIES
- EXPAND TEACHING FACILITIES
- CONSTRUCT INTERNAL CONNECTIONS BETWEEN COMMUNITIES

MASTERPLAN

SCALE 1:500 @ A3

CONCEPTUAL MASTERPLAN PRESENTATION-STAGING

ST MICHAEL'S LUTHERAN SCHOOL
6 BALHANNAH ROAD, HAHNDORF SA 5245

2118 - 28.06.1022

© copyright JBG Architects Pty. Ltd. All rights reserved



INTERNAL CONNECTION LINK

CONCEPTUAL MASTERPLAN PRESENTATION-STAGING

ST MICHAELS LUTHERAN SCHOOL
 6 BALHANNAH ROAD, HAHNDORF SA 5245

2118 - 28.06.1022

© copyright JBG Architects Pty. Ltd. All rights reserved

LEGEND

COMMUNITIES

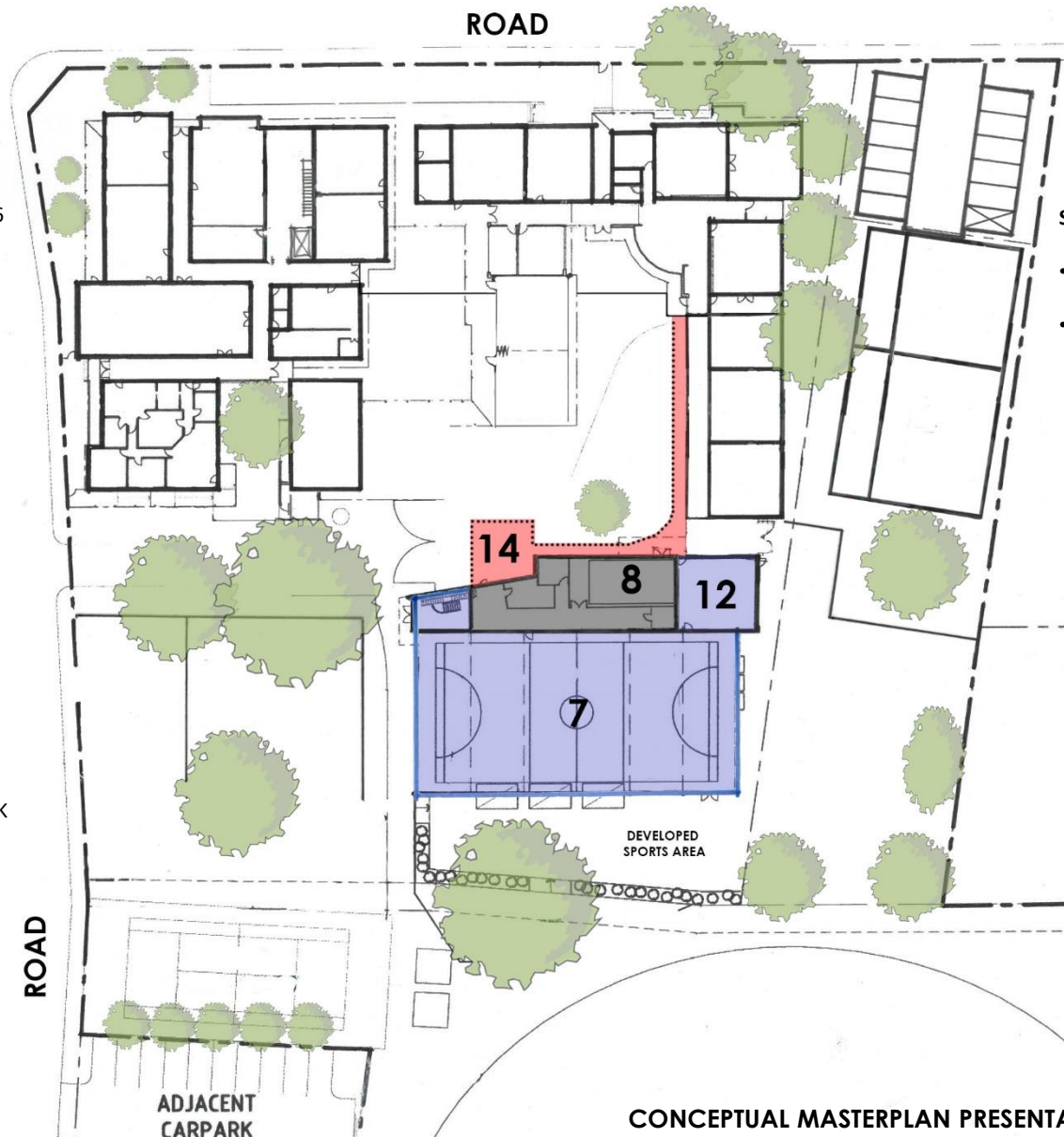
1. ELC (36 MONTHS TO PRE-SCHOOL)
- 1A. ELC (LONG DAY CARE - BIRTH TO 36 MONTHS)
2. RECEPTION
3. YR 1 + 2 COMMUNITY
4. YR 3 + 4 COMMUNITY
5. YR 5 + 6 COMMUNITY

SPECIAL LEARNING AREAS

6. WELL BEING CENTRE
7. P.E CENTRE
8. RESOURCE CENTRE + MUSIC FACILITIES + (MORNING/EVENING OSHC HUB)
9. MAKERS SPACE (EXPANDED)
10. TEACHERS FACILITIES & TOILETS
11. TOILETS
12. ART ROOM/SPECIALITY LEARNING FACILITIES

FUTURE OPPORTUNITIES

13. ADMINISTRATION/STAFF ROOM FACILITIES
14. ACCESS RAMP WITH VIEWING DECK TO UPPER LEVEL
15. ELC CARPARK
16. PLAYGROUND/OVAL PAVILION
17. COVERED WORKING SPACE
18. INTERNAL CONNECTION
19. STUDENT PLAZA
20. GATEWAY ENTRY PLAZA



STAGE 6

- CONSTRUCT RAMPED LINK TO UPPER LEVEL OF SPORTS CENTRE
- ALTERATIONS TO SPORTS CENTRE TO ACCOMMODATE RESOURCE CENTRE, MUSIC + SPECIALTY LEARNING FACILITIES

MASTERPLAN

SCALE 1:500 @ A3

CONCEPTUAL MASTERPLAN PRESENTATION-STAGING

ST MICHAEL'S LUTHERAN SCHOOL
6 BALHANNAH ROAD, HAHNDORF SA 5245

2118 - 28.06.1022

© copyright JBG Architects Pty. Ltd. All rights reserved



MUSIC, DRAMA, MAKER'S SPACE



CONCEPTUAL MASTERPLAN PRESENTATION-STAGING

ST MICHAELS LUTHERAN SCHOOL
6 BALHANNAH ROAD, HAHNDORF SA 5245

2118 - 28.06.1022

© copyright JBG Architects Pty. Ltd. All rights reserved



LEGEND

COMMUNITIES

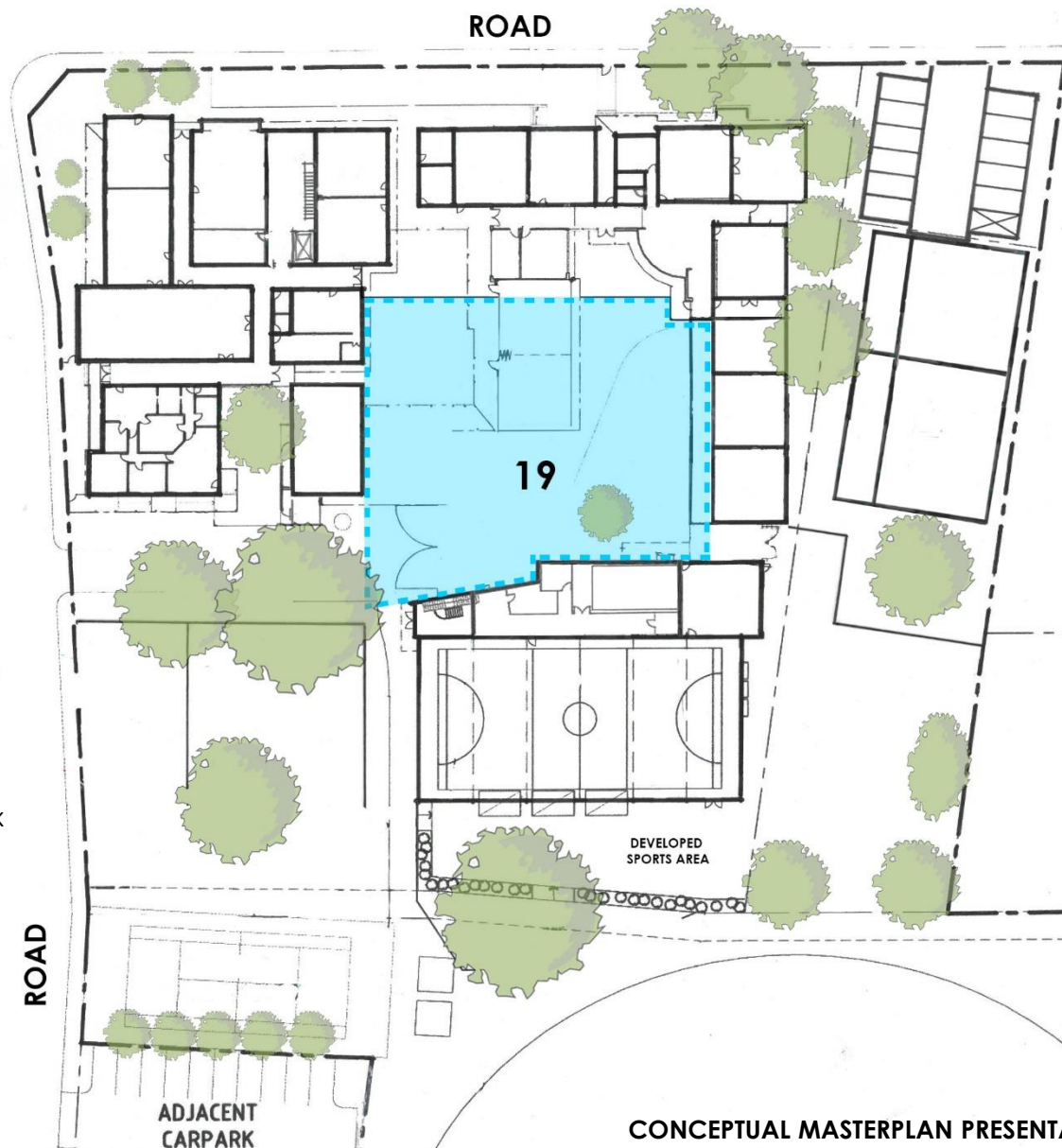
1. ELC (36 MONTHS TO PRE-SCHOOL)
- 1A. ELC (LONG DAY CARE - BIRTH TO 36 MONTHS)
2. RECEPTION
3. YR 1 + 2 COMMUNITY
4. YR 3 + 4 COMMUNITY
5. YR 5 + 6 COMMUNITY

SPECIAL LEARNING AREAS

6. WELL BEING CENTRE
7. P.E CENTRE
8. RESOURCE CENTRE + MUSIC FACILITIES + (MORNING/EVENING OSHC HUB)
9. MAKERS SPACE (EXPANDED)
10. TEACHERS FACILITIES & TOILETS
11. TOILETS
12. ART ROOM/SPECIALITY LEARNING FACILITIES

FUTURE OPPORTUNITIES

13. ADMINISTRATION/STAFF ROOM FACILITIES
14. ACCESS RAMP WITH VIEWING DECK TO UPPER LEVEL
15. ELC CARPARK
16. PLAYGROUND/OVAL PAVILION
17. COVERED WORKING SPACE
18. INTERNAL CONNECTION
19. STUDENT PLAZA
20. GATEWAY ENTRY PLAZA



STAGE 7

- CONVERT RESOURCE CENTRE (HUB) INTO ROOFED EXTERNAL SPACE STUDENT PLAZA

MASTERPLAN

SCALE 1:500 @ A3

CONCEPTUAL MASTERPLAN PRESENTATION-STAGING

ST MICHAEL'S LUTHERAN SCHOOL
6 BALHANNAH ROAD, HAHNDORF SA 5245

2118 - 28.06.1022

© copyright JBG Architects Pty. Ltd. All rights reserved



NATURAL LIGHT & OPEN LEARNING

CONCEPTUAL MASTERPLAN PRESENTATION-STAGING



OUTDOOR LEARNING



CONCEPTUAL MASTERPLAN PRESENTATION-STAGING

ST MICHAELS LUTHERAN SCHOOL
6 BALHANNAH ROAD, HAHNDORF SA 5245
2118 - 28.06.1022

© copyright JBG Architects Pty. Ltd. All rights reserved



LEGEND

COMMUNITIES

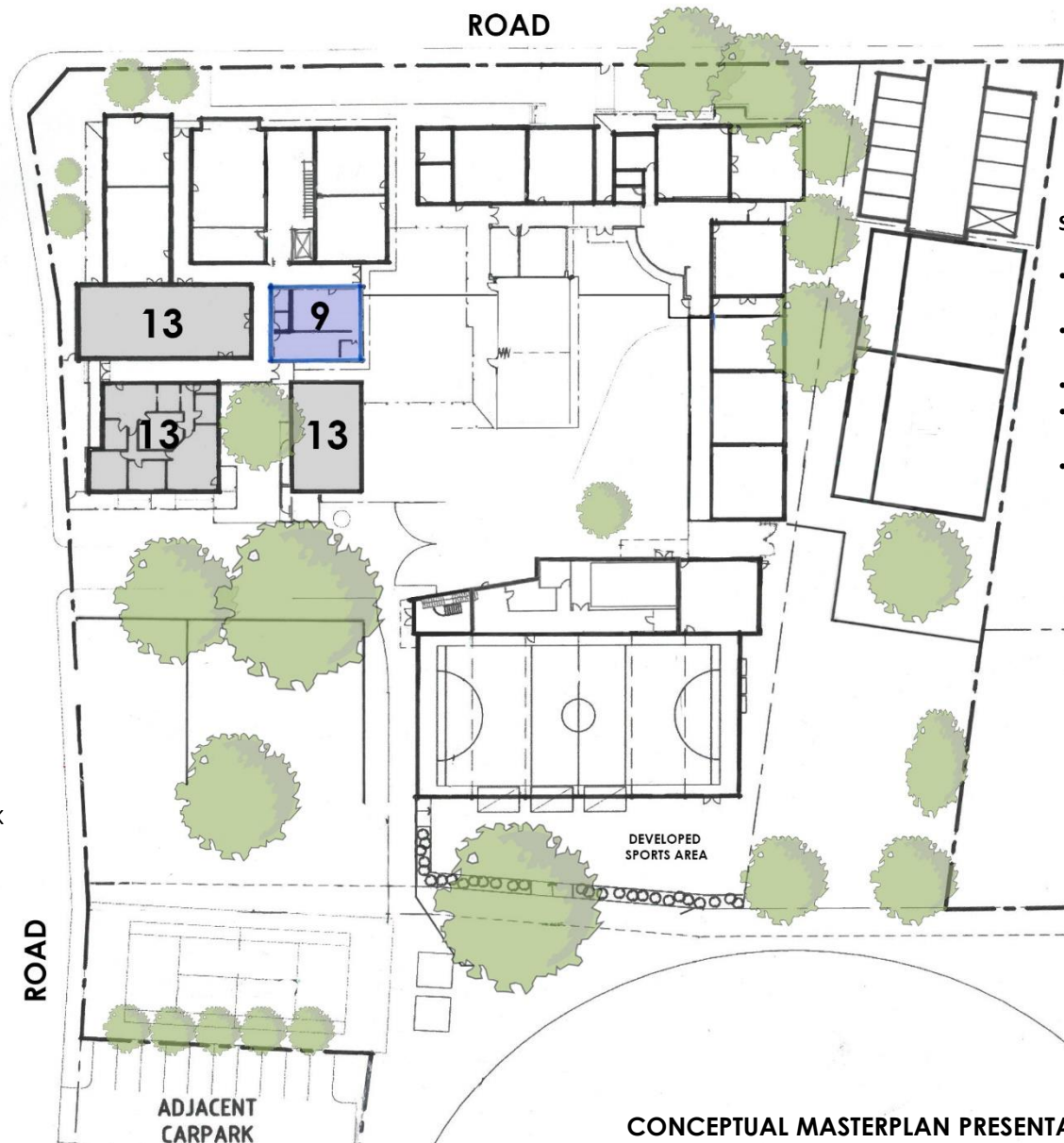
1. ELC (36 MONTHS TO PRE-SCHOOL)
- 1A. ELC (LONG DAY CARE - BIRTH TO 36 MONTHS)
2. RECEPTION
3. YR 1 + 2 COMMUNITY
4. YR 3 + 4 COMMUNITY
5. YR 5 + 6 COMMUNITY

SPECIAL LEARNING AREAS

6. WELL BEING CENTRE
7. P.E CENTRE
8. RESOURCE CENTRE + MUSIC FACILITIES + (MORNING/EVENING OSHC HUB)
9. MAKERS SPACE (EXPANDED)
10. TEACHERS FACILITIES & TOILETS
11. TOILETS
12. ART ROOM/SPECIALITY LEARNING FACILITIES

FUTURE OPPORTUNITIES

13. ADMINISTRATION/STAFF ROOM FACILITIES
14. ACCESS RAMP WITH VIEWING DECK TO UPPER LEVEL
15. ELC CARPARK
16. PLAYGROUND/OVAL PAVILION
17. COVERED WORKING SPACE
18. INTERNAL CONNECTION
19. STUDENT PLAZA
20. GATEWAY ENTRY PLAZA



STAGE 8

- UPGRADE STAFF FACILITIES + EXPAND MAKER SPACE
- DEMOLISH EXISTING TOILET + MUSIC CENTRE
- CONSTRUCT NEW FACILITIES
- RELOCATE EXISTING STAFF FACILITIES
- EXPAND + RELOCATE MAKER SPACE

MASTERPLAN

SCALE 1:500 @ A3

CONCEPTUAL MASTERPLAN PRESENTATION-STAGING

ST MICHAEL'S LUTHERAN SCHOOL
6 BALHANNAH ROAD, HAHNDORF SA 5245
2118 - 28.06.1022

© copyright JBG Architects Pty. Ltd. All rights reserved



STAFF FACILITIES



CONCEPTUAL MASTERPLAN PRESENTATION-STAGING

ST MICHAEL'S LUTHERAN SCHOOL
6 BALHANNAH ROAD, HAHNDORF SA 5245

2118 - 28.06.1022

© copyright JBG Architects Pty. Ltd. All rights reserved



LEGEND

COMMUNITIES

1. ELC (36 MONTHS TO PRE-SCHOOL)
- 1A. ELC (LONG DAY CARE - BIRTH TO 36 MONTHS)
2. RECEPTION
3. YR 1 + 2 COMMUNITY
4. YR 3 + 4 COMMUNITY
5. YR 5 + 6 COMMUNITY

SPECIAL LEARNING AREAS

6. WELL BEING CENTRE
7. P.E CENTRE
8. RESOURCE CENTRE + MUSIC FACILITIES + (MORNING/EVENING OSHC HUB)
9. MAKERS SPACE (EXPANDED)
10. TEACHERS FACILITIES & TOILETS
11. TOILETS
12. ART ROOM/SPECIALITY LEARNING FACILITIES

FUTURE OPPORTUNITIES

13. ADMINISTRATION/STAFF ROOM FACILITIES
14. ACCESS RAMP WITH VIEWING DECK TO UPPER LEVEL
15. ELC CARPARK
16. PLAYGROUND/OVAL PAVILION
17. COVERED WORKING SPACE
18. INTERNAL CONNECTION
19. STUDENT PLAZA
20. GATEWAY ENTRY PLAZA



MASTERPLAN
SCALE 1:500 @ A3

CONCEPTUAL MASTERPLAN PRESENTATION-STAGING

ST MICHAEL'S LUTHERAN SCHOOL
6 BALHANNAH ROAD, HAHNDORF SA 5245
2118 - 28.06.1022
© copyright JBG Architects Pty. Ltd. All rights reserved